

OCT 25 2021

Approved

REQUEST FOR AGENDA PLACEMENT FORM

Submission Deadline - Tuesday, 12:00 PM before Court Dates

SUBMITTED BY: Ralph McBroom

TODAY'S DATE: October 19, 2021

DEPARTMENT: Purchasing

DEPARTMENT HEAD: Ralph McBroom

REQUESTED AGENDA DATE: October 25, 2021

SPECIFIC AGENDA WORDING: Consideration and Award of Access Control System from IronForge Systems, Inc for Burleson Sub-Courthouse in the amount of \$40,863.44.

PERSON(S) TO PRESENT ITEM: Ralph McBroom C.P.M.

SUPPORT MATERIAL: (See attached)

TIME: 5 min	ACTION ITEM: X
(Anticipated number of minutes needed to discuss item)	WORKSHOP
	CONSENT:
	EXECUTIVE:

STAFF NOTICE:

COUNTY ATTORNEY:

AUDITOR:

PERSONNEL:

BUDGET COORDINATOR:

IT DEPARTMENT:

PURCHASING DEPARTMENT:

PUBLIC WORKS:X

OTHER:

*****This Section to be completed by County Judge's Office*****

ASSIGNED AGENDA DATE: _____

REQUEST RECEIVED BY COUNTY JUDGE'S OFFICE _____

COURT MEMBER APPROVAL _____ Date _____

Quotation Anyalsis

	Convergent	IronForge Systtms,Inc
Access Control System	\$65,581.00	\$40,863.44



IronForge Systems, Inc
 2121 Lohmans Crossing Ste 504825
 Lakeway TX 78734
 (281)840-2104
 Texas Security License B14658

Budget

AUI Partners,
 13600 Heritage Pkwy - Suite 150
 Fort Worth, Texas 76177
 M 817.925.2684 P 817.926.4377

Date: Sept 21 2021 Johnson County Courthouse

Estimate ID:09212021
 Deal ID:

Part Number	Description	Lead Time (Days)	Qty	HRS	Unit Net Price	Extended Net Price
-------------	-------------	------------------	-----	-----	----------------	--------------------

IFS Services

Services	Cat 6 data Cabling Services	0	12.00	3	85.00	3,060.00
Services	Door Lock Power and door device cabling	0	12.00	1.5	235.00	4,230.00
Services	Maglock services	0	2.00	4	85.00	680.00
Services	Device installation	0	14.00	2.5	85.00	2,975.00
Services	Secure I/O Moudle terminations	0	12.00	1.75	85.00	1,785.00
Services	Terminations	0	24.00	2.5	85.00	5,100.00
Locksmith	Electric Lock installation	0	13.00	1	260.00	3,380.00
Services	Test and Verify (Assist with Configuration)	0	12.00	1.5	85.00	1,530.00
		0			Labor Total	17,830.00

Part Number	Description	Lead Time	Unit List Price	Qty	Unit Net Price	Extended Net Price
BioEntry W2	fingerprint access control device	0		12	833.00	9,996.00
Secure I/O	Secure IO 2 Compact Single Door Module	0		12	89.99	1,079.88
Power Adapter	Plug in power supply	0		12	35.99	431.88
BSTR2-BSC BioStar 2	Basic License Software, 1-20 Doors	0		1	379.00	379.00

UTP06	Cat 6 data Cable	0	3	497.55	1,492.65
GRI1704	Door position switch	0	14	19.33	270.62
WP18/4	Sensor cable	0	14	277.05	3,878.70
Altronix 12V/24VDC	Door lock Power Supply	0	3	338.74	1,016.22
Securitron M32 600 Lb	Magnalock With Dual Voltage, 12/24VDC	0	2	331.00	662.00
HES 9906	surface mounted electric strike	0	11	296.50	3,261.50
Alarm Controls TS-60	door release button	0	1	277.00	277.00
Bosch 150i	Ceiling mount motion REX for MagLock	0	1	98.00	98.00
30MF1CD	Suprema 30MF1CD 1kb MIFARE Card, 30-Pack	0	1	189.99	189.99
				Material Total	23,033.44
Other					
	Texas Lock Permit	0	0	1,200.00	0.00
				Material Total	-

Valid through:
 FOB Point: None

Product Total \$23,033.44
 Service Total : \$17,830.00
 Other Total \$0.00
 Total Price: \$40,863.44

Notes

** County to provide computer for Suprema Software

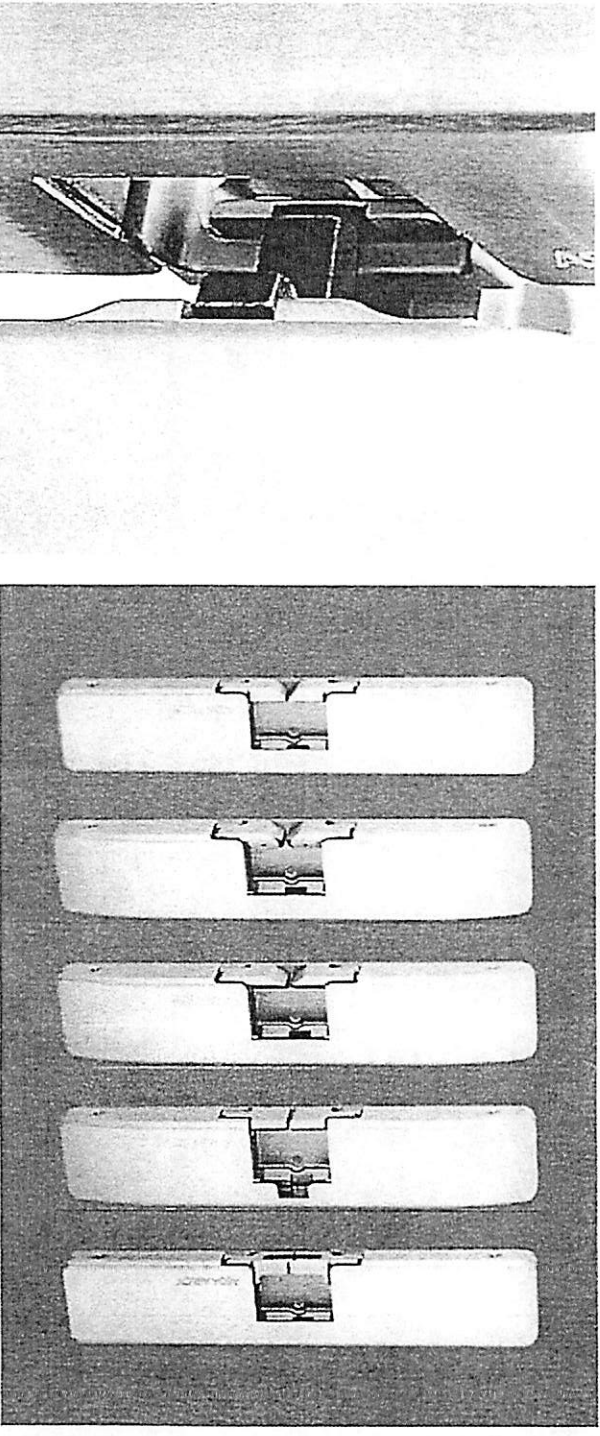
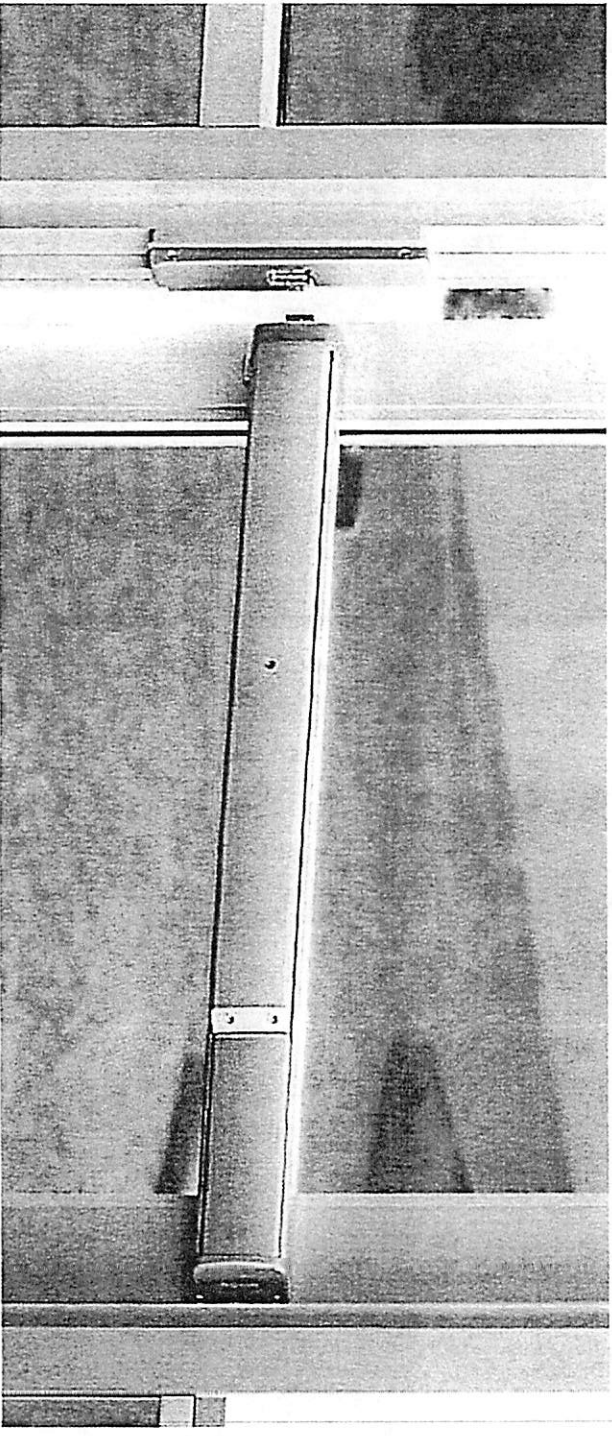
ASSA ABLOY

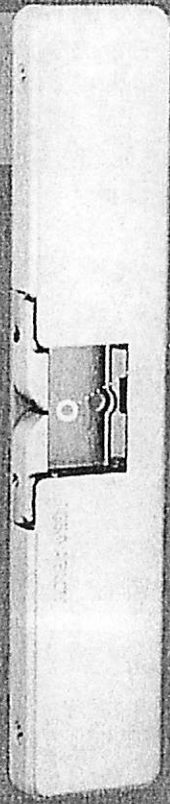
Electric Strikes for Every Exit Device

HES 9000 Family
Surface Mounted Electric Strikes

ELECTRONIC SECURITY HARDWARE HES PRODUCTS

The global leader in
door opening solutions





HES 9400
Works with rim exit devices up to 1/2" throw latchbolt



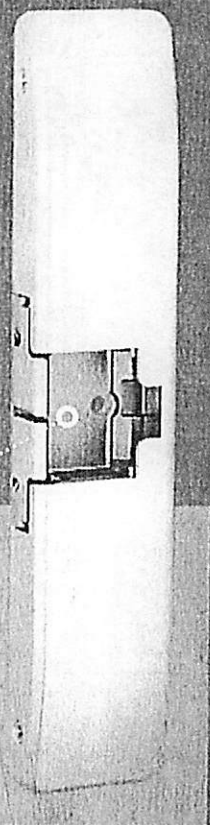
HES 9500
Works with rim exit devices up to 3/4" throw latchbolt

- UL 10C fire-rated, 3-hour single door (fail secure only)
- CAN/ULC-S104 fire door conformant
- WHI fire door listed
- NFPA-252 fire door conformant
- ASTM-E152 fire door compliant
- California Fire Marshall listed
- NFPA 80-07 compliant



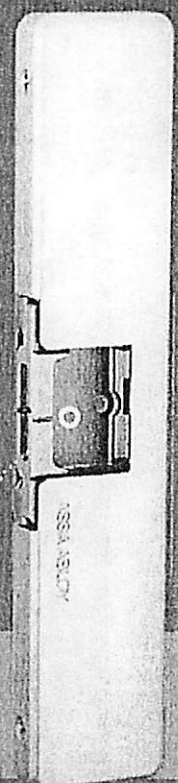
HES 9600
Works with rim exit devices up to 3/4" throw latchbolt

- ANSI/SDI A250.13 windstorm resistant
- Florida Building Code Approved TAS 201, 202, 203
- ANSI-ASTM E330



HES 9700
Works with Corbin Russwin SecureBolt® and Yale SquareBolt® exit devices

- ANSI/SDI A250.13 windstorm resistant
- Florida Building Code Approved TAS 201, 202, 203
- UL 10C fire-rated, 3-hour single door (fail secure only)
- CAN/ULC-S104 fire door conformant
- NFPA-252 fire door compliant
- ASTM-E152 fire door compliant
- California Fire Marshall listed
- NFPA 80-07 compliant
- ANSI-ASTM E330



HES 9800
Works with Adams Rite Starwheel and interlocking rim exit devices



Grade 1



Dual Voltage 12/24



SecuriCare Warranty



Outdoor Rated



Rim Exit Devices



Burglary Rated



Field Selectable (Fall Secure/Fall Safe)

Specifications for all HES 9000 Family Strikes

Certifications

- ANSI/BHMA, A156.31 Grade 1
- UL 1034 burglary-resistant listed and suitable for outdoor use
- UL 294 listed
- UL 305 listed
- RoHS Compliant

Features

- No cutting required
- Horizontal adjustability
- ElectroLynx™ plug-in connectors
- Non-handed
- Internally mounted solenoid
- Tamper resistant
- Stainless steel construction
- SecuriCare five-year no-fault, no questions asked warranty

Electrical

(DC Continuous Duty)

- Dual voltage 12/24 VDC
- 450 mA at 12VDC/250 mA at 24 VDC



FRAME APPLICATION

HOLDING FORCE

ELECTRICAL

SPECIFICATIONS

	1/2" PULLMAN		FIRE RATED 3/4" PULLMAN		3/4" PULLMAN		SQUAREBOLT/SECUREBOLT		STARWHEEL INTERLOCK
	HES 9400	Competitor	HES 9500	Competitor	HES 9600	HES 9700	Competitor	HES 9800	
Hollow Metal & Wood	✓	✓	✓	✓	✓	✓	✓	✓	✓
Aluminum	✓	✓	✓	✓	✓	✓	✓	✓	✓
Surface Mounted - No Cutting Required	✓	✓	✓	✓	✓	✓	✓	✓	✓
1/2" Pullman Rim Exit Devices	✓	✓							
3/4" Pullman Rim Exit Devices	✓	✓	✓	✓	✓				
Securebolt & Squarebolt Rim Exit Devices						✓	✓		
Adams Rite Starwheel & Interlocking Rim Exit Devices									✓
Installation Template	✓	✓	✓	✓	✓	✓	✓	✓	✓
	9000-MTK		9000-MTK		9000-MTK	9000-MTK		9000-MTK	9000-MTK
Static Strength*	1,500 lbs	1,500 lbs	1,500 lbs	3,000 lbs*	2,000 lbs	2,000 lbs	1,500 lbs*	1,500 lbs	
Dynamic Strength	70 ft-lbs		70 ft-lbs		120ft-lbs	120ft-lbs		70 ft-lbs	
12 VDC Current Draw	450 mA	500 mA	450 mA	566 mA	450 mA	450 mA	566 mA	450 mA	
24 VDC Current Draw	250 mA	255 mA	250 mA	253mA	250 mA	250 mA	253mA	250 mA	
Dual Voltage 12/24 VDC Continuous Duty	✓	11 to 28VAC/DC	✓		✓	✓	11 to 28VAC/DC	✓	
Field Selectable (Fall Secure/Fall Safe)	✓	✓	✓		✓	✓	✓	✓	
UL 1034 Burglary-Resistant Listed (Indoor)	✓		✓		✓	✓		✓	
UL 1034 Burglary-Resistant Listed (Outdoor)	✓		✓		✓	✓		✓	
UL 294 Listed	✓		✓		✓	✓		✓	
UL 305 Listed	✓		✓		✓	✓		✓	
UL 10C Fire Rated - Class A, 3 Hour Single Door			✓	✓		✓			
Windstorm Resistant					✓	✓			
RoHS Compliant	✓		✓		✓	✓		✓	
Cycle Testing	1M	1M	1M	1.5M	1M	1M		1M	
Finish Options	8	6	7	6	8	7	6	7	
Monitoring Type	✓	✓	✓	✓	✓	✓	✓	✓	COMING SOON
	Latchbolt + Strike Status	Latchbolt Status Only	Latchbolt + Strike Status	Latchbolt Status Only	Latchbolt + Strike Status	Latchbolt + Strike Status	Latchbolt Status Only	Latchbolt + Strike Status	Latchbolt + Strike Status
Monitoring Factory Configured (FC) Or Field Installable (FI)	FC	FC	FC	FC	FC	FC	FC	FC	FC
Warranty	Five-year no-questions asked	Two year	Five-year no-questions asked	Two year	Five-year no-questions asked	Five-year no-questions asked	Two year	Five-year no-questions asked	Five-year no-questions asked
Construction	Stainless Steel		Stainless Steel		Stainless Steel	Stainless Steel		Stainless Steel	

*Requires additional frame drilling and mounting pins to meet strength.

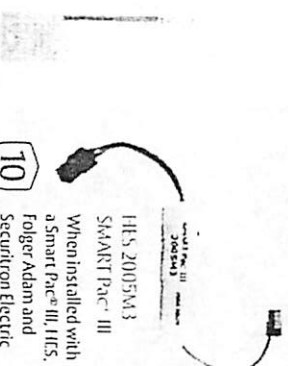
ASSA ABLOY is the global leader in door opening solutions, dedicated to satisfying end-user needs for security, safety and convenience.

ASSA ABLOY

Accessories

- 2005M3 SMART Pac® III
- SMB Surface mounting box
- 9000-MTK Metal Template Kit
- 9000-108-XXX 1/8" Spacer plate (available in 613E, 628E, 630 & BSP Finishes)
- 9000-116-XXX 1/16" Spacer plate (available in 613E, 628E, 630 & BSP Finishes)

HES 9000-MTK

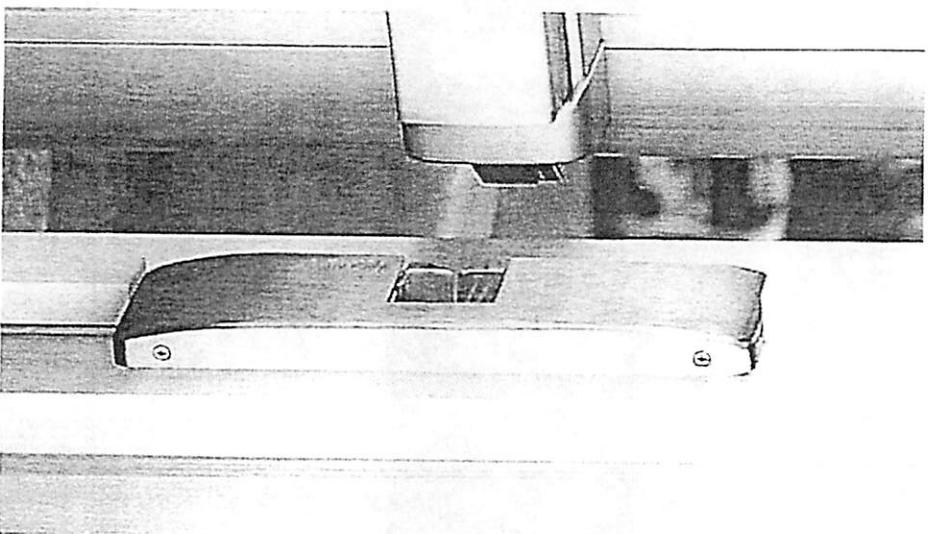


HES 2005M3 SMART Pac® III
When installed with a Smart Pac® III, IFS, Folger Adam and Securtron Electric Strikes are upgraded to the SecurCare no-fault 10-year Warranty.

How to Order

Series	Finish*	Option(s)
9700	-630	-LBM
9400	605 Bright Brass	LBM Latchbolt Monitor
9500	606 Satin Brass	LBSM Latchbolt Strike Monitor
9600	612 Satin Bronze	
9700	613 Bronze Toned	
9800	613E Dark Oxidized Satin Bronze	
	629 Bright Stainless Steel	
	630 Satin Stainless Steel	

LBM — Latchbolt monitor detects when latchbolt is in a locked state.
LBSM — Latchbolt strike monitor detects latchbolt and strike are in a locked state.



ELECTRONIC SECURITY HARDWARE

HES | Securtron

USA

800.626.7590 | assaablovesh.com

customersevice@assaablovesh.com | techsupport@assaablovesh.com | orders@assaablovesh.com

CANADA

800.461.3007 | assaablovesh.ca

sales.dss.ca@assaablovesh.com | orders.dss.ca@assaablovesh.com

Connect with ASSA ABLOY Electronic Security Hardware

[Facebook](https://www.facebook.com/assaablovesh) | [Instagram](https://www.instagram.com/assaablovesh) | [LinkedIn](https://www.linkedin.com/company/assaablovesh) | ASSA ABLOY Electronic Security Hardware

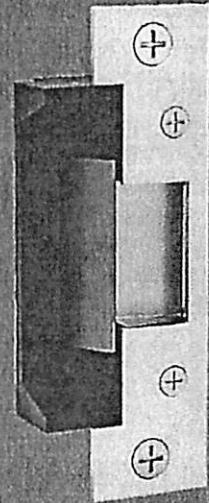
Patent pending and/or patent www.assaablovesh.com/patents

Copyright © 2019, Hanchett Entry Systems, Inc., an ASSA ABLOY Group company. All rights reserved. Reproduction in whole or in part without the express written permission of Hanchett Entry Systems, Inc. is prohibited. ESH-010-0319

HES[®] 5000 Electric Strike

Works with cylindrical locksets
up to a 5/8" throw latchbolt

Also available in
a Complete One
Box Solution



The Grade 1,
low-profile solution
for cylindrical
locksets.

The HES 5000 Series Electric Strike is a compact, high performance electric strike designed for low profile openings where there is limited space behind the jamb. Its strength is derived from a unique keeper pin locking design, enabling the HES 5000 to exceed the ratings of the frame, door and locking hardware. This field selectable fail safe/fail secure unit is easy to install and accommodates latchbolts up to 5/8" throw.

Features

Standard Features

- Tamper resistant
- Static strength 1,500 lbs
- Dynamic strength 70 ft-lbs
- Endurance 1 million cycles
- Field selectable fail safe/fail secure
- Non-handed
- Internally mounted solenoid
- Accommodates 1/2" - 5/8" [12.7mm - 15.9mm] latchbolt (5/8" [15.9mm] with 1/8" [3.2mm] door gap)
- Strike body depth 1-1/16" [27.3mm]
- Plug-in connector
- Trim enhancer included
- SecuriCare five-year, no-fault, no questions asked warranty (Addition of HES SMART Pac[®] III extends the warranty to 10 years)

Optional Features

- LBM Latchbolt monitor

Accessories

- 150 Strike latch guard
- HES-CUT-MTK Metal template kit
- 2001M Plug-in bridge rectifier
- 2004M Electrolynx[®] adapter
- 2005M3 SMART Pac[®] III
- 2006M Plug-in buzzer
- 5104-1/2 1/2" [12.7mm] stackable lip extension
- 5104-1 1" [25.4mm] stackable lip extension
- 5104-1-1/4 1-1/4" [32mm] stackable lip extension



Grade 1



SecuriCare
Warranty



Cylindrical
Locksets



Field Selectable
(Fail secure/
Fail safe)



Dual Voltage
12/24



PoE
Friendly



Outdoor
Rated



Burglary
Rated

Specifications

Certifications

- ANSI/BHMA A156.31, Grade 1
- UL 1034 burglary-resistant listed and suitable for outdoor use
- UL 294 listed
- RoHS compliant

Frame Application

- Metal
- Wood

Electrical (DC Continuous Duty)

- Dual voltage 12/24 VDC/VAC
- 240 mA at 12 VDC/120 mA at 24 VDC
- PoE friendly

Dimensions

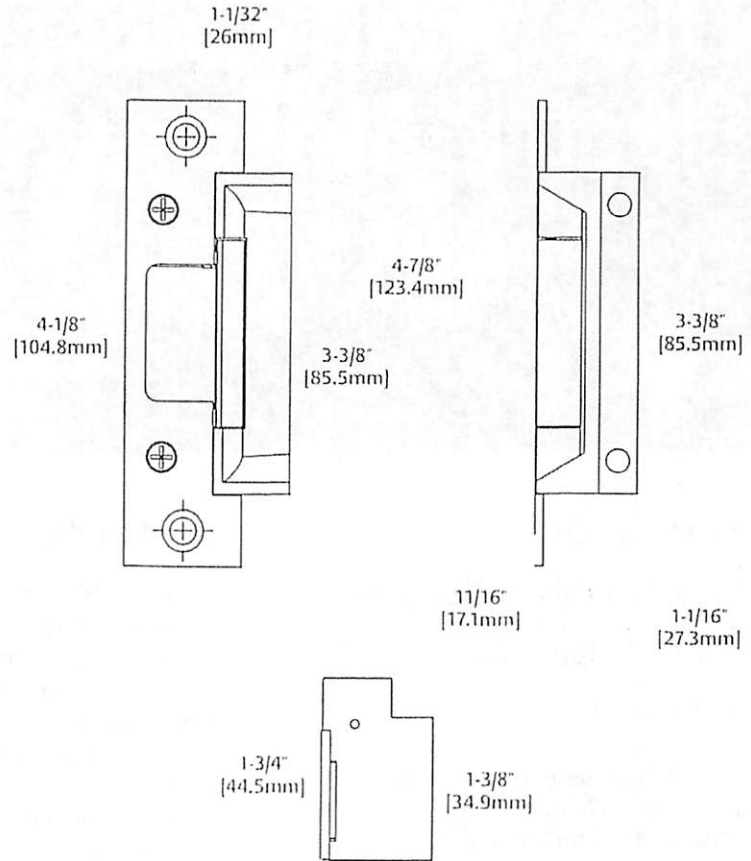


Diagram shown with 501 Option

How to Order

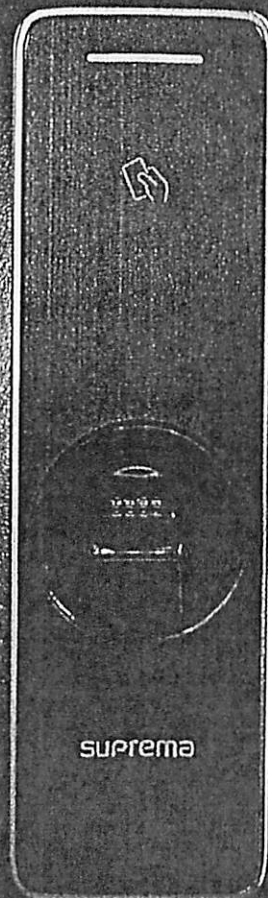
SERIES	MODEL	FINISH	OPTION(S)
5000	—	— 630	— LBM
5000 Universal Electric Strike; faceplates ordered separately	C Complete Electric Strike; includes the 501 and 501A faceplates	605 Bright Brass 606 Satin Brass 612 Satin Bronze 613 Bronze Toned 629 Bright Stainless Steel 630 Satin Stainless Steel BLK Black	LBM Latchbolt Monitor

*Complete Pacs are only available in the 630 finish

NOTE: Electric strike compatibility is determined at time of electric strike product release. ASSA ABLOY is not responsible for incompatibility of products that have changed in design or craftsmanship by their respective manufacturers. When compatibility is a concern, contact Customer Support for application assistance.

BioEntry W2

Outdoor IP Fingerprint Device



Suprema BioEntry W2 is a rugged fingerprint access control device featuring Suprema's next generation biometric technology and security platform. BioEntry W2 provides class-leading performance and security by featuring Suprema's latest fingerprint algorithm coupled by powerful quad-core CPU and LFD(live finger detection) technology. The device also provides added flexibility in system design by featuring multi card reading with dual-frequency RFID technology. Packed in a rugged IP67/IK09 housing with sleek metallic finish, BioEntry W2 is a perfect access control solution for tough environment and outdoor installation.

BioEntry W2

Outdoor IP Fingerprint Device

Features



Best-in-class Performance

- Latest Suprema algorithm
- 1.2GHz quad-core CPU



Improved Accuracy & Security

- New advanced Live Finger Detection(LFD) technique
- High-precision OPS optical sensor



Expanded Capacity

- Max. 500k users/1 million text logs
- Large memory: 2GB Flash + 256 MB RAM



Rugged Structure

- IK09 impact protection
- IP67 ingress protection
- Ideal for outdoor installation



Multi RFID Card Reading

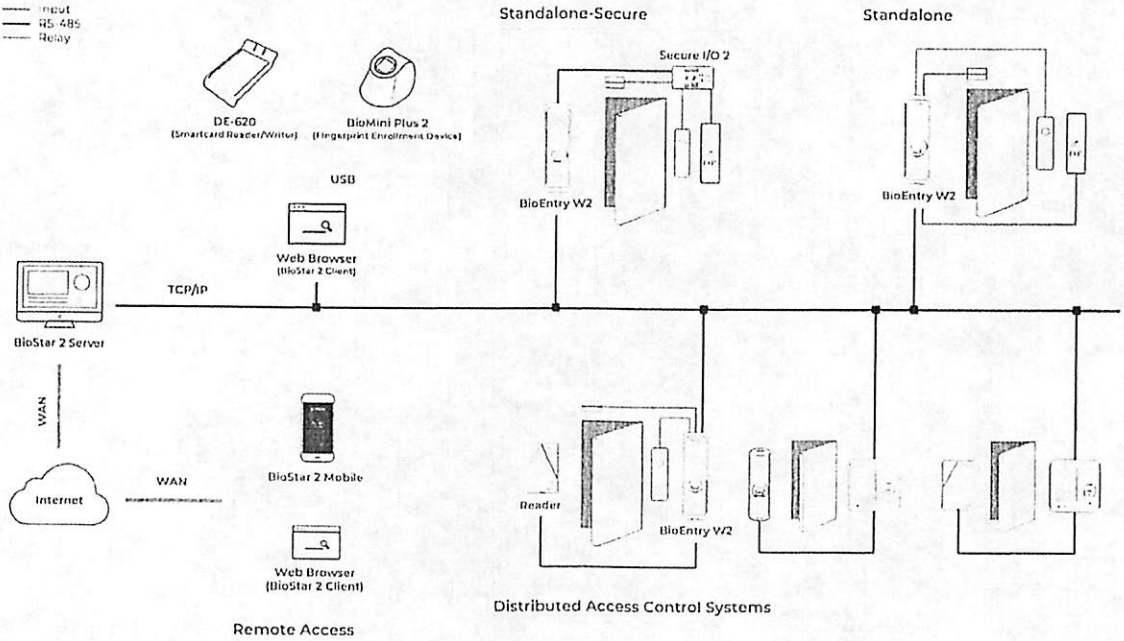
- LF(125kHz), HF(13.56MHz) dual-band
- Reads all card types that HID multiCLASS supports (EM/HID Prox/MIFARE/CLASS/DESFire/FeliCa/NFC)

Specifications

	BEW2-010 BEW2-012 BEW2-014 BEW2-016 BEW2-018 BEW2-020 BEW2-022 BEW2-024 BEW2-026 BEW2-028 BEW2-030 BEW2-032 BEW2-034 BEW2-036 BEW2-038 BEW2-040 BEW2-042 BEW2-044 BEW2-046 BEW2-048 BEW2-050 BEW2-052 BEW2-054 BEW2-056 BEW2-058 BEW2-060 BEW2-062 BEW2-064 BEW2-066 BEW2-068 BEW2-070 BEW2-072 BEW2-074 BEW2-076 BEW2-078 BEW2-080 BEW2-082 BEW2-084 BEW2-086 BEW2-088 BEW2-090 BEW2-092 BEW2-094 BEW2-096 BEW2-098 BEW2-100		
Model Name	BEW2-OHPB	BEW2-ODPB	BEW2-OAPB
RF Option	125kHz EM, HID Prox & 13.56MHz DESFire, MIFARE Plus, DESFire EV1, EV2, FeliCa, NFC 2-FREQUENCY	125kHz EM, 13.56MHz MIFARE Plus, DESFire EV1, EV2, FeliCa, NFC 2-FREQUENCY	125kHz EM, HID Prox & 13.56MHz MIFARE Plus, DESFire EV1, EV2, FeliCa, CLASS, SESAS, NFC, 2-FREQUENCY
Biometric	Fingerprint		
Sensor Type	Optical Sensor (OPS)		
Template	SUPREMA / ISO 19794-2 / ANSI 378		
Extractor / Matcher	MINEX certified and compliant		
LFD	Supported		
CPU	1.2 GHz Quad Core		
Memory	2GB Flash + 256 MB RAM		
Max. User	500,000 (I1), 100,000 (I1N)		
Max. Template	1,000,000 (I1), 200,000 (I1N), [Two templates per finger]		
Max. Logs	1,000,000 (text)		
LED	Multi-Color		
Sound	Multi-tone Buzzer		
Ethernet	10/100 Mbps, auto MDI/MDI-X		
RS-485	1ch host or slave (selectable), OSDP V2.16		
Wiegand	1ch input or output (selectable)		
TTL	2ch input		
Relay	1 Relay		
PoE	Supported (IEEE 802.3af compliant)		
Ingress Protection	IP67		
Impact Protection	IK09		
Tamper	Supported		
Power	Voltage: DC 12V Current: Max. 600 mA		
Operating Temperature	-20°C ~ 50°C		
Operating Humidity	0% ~ 80%, non-condensing		
Dimensions (W x H x D mm)	50 x 172 x 435		
Certificates	CE, FCC, KC, RoHS, REACH, WEEE, UL 294 * UL 294 is applied to only BEW2-OAP model.		

* UL 294 certificate is supported by the following models and requires the use of the Fire Exit Alarm (FEA) module with the BEW2-OAP model. (UL 294 is not supported for the BEW2-OHPB model.)

System Configurations



Suprema Inc.
 17F Parkview Tower, 24B, Jeongjail-ro, Bundang-gu, Seongnam-si, Gyeonggi-do, 13554, Republic of Korea
 T +82 31 783 4502 E sales_sys@supremainc.com www.supremainc.com

For more information about Suprema's global branch offices, visit the webpage below by scanning the QR code.
<https://www.supremainc.com/en/about/contact-us.asp>

© 2021 Suprema Inc. Suprema and identifying product names and numbers herein are registered trade marks of Suprema Inc. All other Suprema brands and product marks are trademarks or registered trademarks of their respective companies. Product appearance, build status and/or specifications are subject to change without notice. [SUPREMA-AM-BEW2-EN-REV1]



2304 Tarpley Road, Suite 124, Carrollton, Texas 75006
Phone 214-390-5164 Mobile 469-853-2807
Sean.hamilton@convergint.com

August 27, 2021

Johnson County
Johnson County Sub-Courthouse
247 Elk Drive Burleson, TX, 76028
Attention:

Quotation: SH00374122P
RFP#:
License/Cert B10716

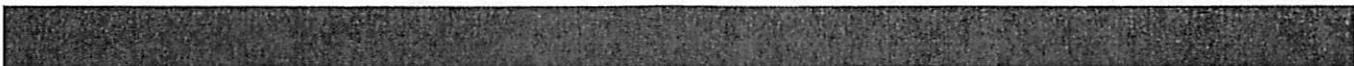
Reference: Sub-Courthouse Alterations

On behalf of Convergint's global network of colleagues, I would like to personally thank you for providing Convergint with the opportunity to present this proposal addressing your electronic security needs. We are confident that this proven solution is both comprehensive and customized to meet your needs today, and in the future.

Convergint's reputation for service excellence is backed by a foundational commitment to our core value of service, and we have been recognized as the #1 Systems Integrator by SDM Magazine. This recognition reflects the strong relationships Convergint has developed with the industry's top technology manufacturers, and our history of success with providing exceptional service to our customers.

Our guiding principle has always been to be our customers' best service provider. Our dedicated and certified team of professionals strives to uphold our customer-focused, service-based mission to make a daily difference for our customers. After achieving a successful on-time and on-budget project installation, Convergint will provide you with the industry's best ongoing service, including our 24/7 customer portal iCare, designed to track service work orders, project progress, and provide you with detailed metric reporting for continuous improvement.

The following security proposal is specifically designed to meet your needs. As your single point of contact, please feel free to contact me with any additional questions you may have. Thank you again for trusting Convergint as your partner.



convergint

Scope of Work

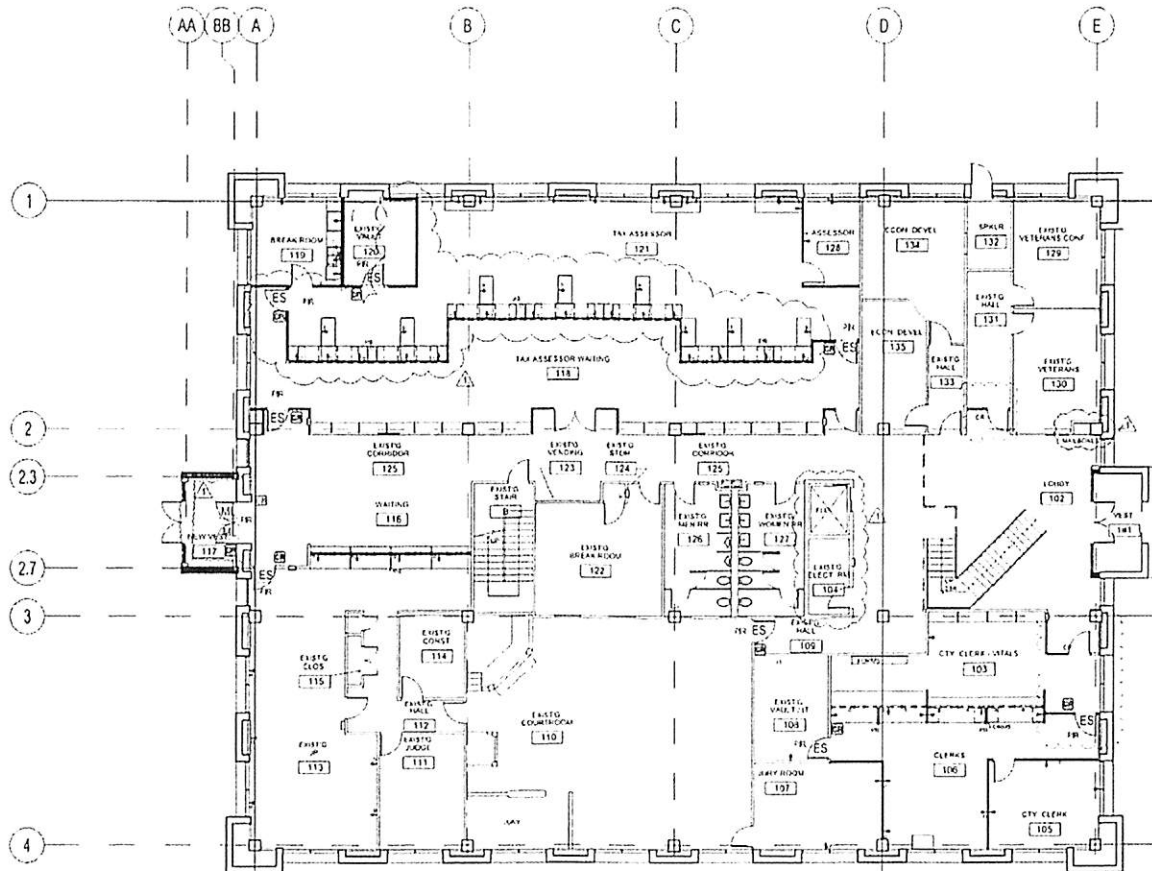
- Convergint has based this proposal on the Contract Issue Drawings dated 2/4/21 and from our site walk on 4/30/21. Also based on revisions sent back after our 8/6/2021 virtual meeting.
- Convergint has proposed to install a new LENEL Access Control System to include (12) card readers and locking hardware, & (8) panic buttons.
- First floor will consist of (10) new BIO/RFID card readers (one enrollment BIO will be provided), (2) single mag locks, (8) electric door strikes, (6) panic buttons, and (1) new LENEL server with a base license for up to 32 readers.
- Second floor will consist of (3) new BIO/RFID card readers, (3) electric door strikes, (1) new panel with LENEL controller, reader boards & power supplies, and (2) panic buttons.

Exclusions & Clarifications

- 120VAC for access control panels to be provided by others.
- Fire Alarm relay to be provided by others.
- Network switches, ports, and connectivity by others.
- No central station monitoring included.
- All work proposed to be completed during normal business hours.
- No cameras or CCTV proposed.
- IP addresses to be provided by others
- BIO fingerprint feature to be used in this application. No cards or credentials provided within this proposal.

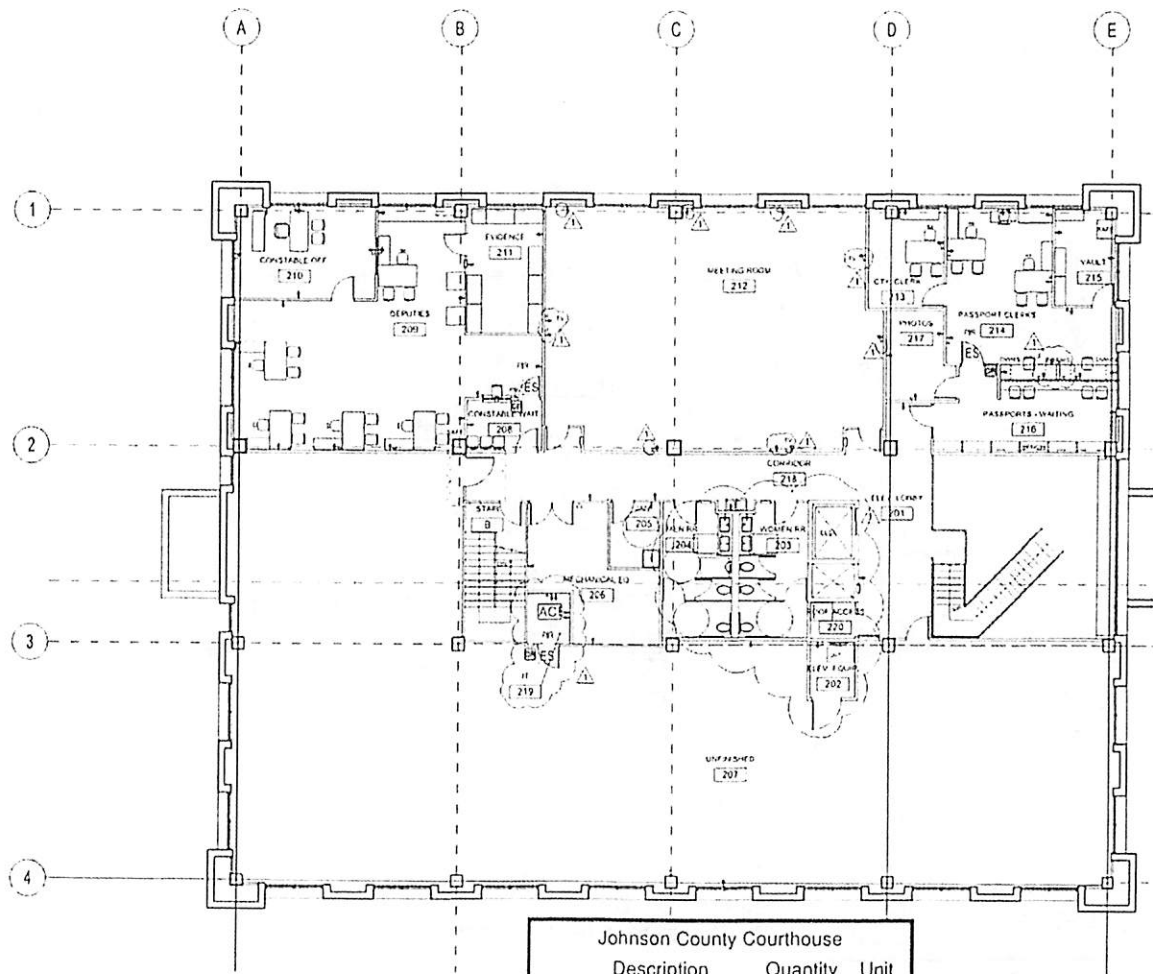


convergent



Johnson County Courthouse			
Description	Quantity	Unit	
CR	9	Count	Card Reader
MC	2	Count	Maglock-Single
PB	6	Count	Panic Button
PR	9	Count	PIR REX
ES	8	Count	Strike

1 FIRST FLOOR POWER AND DATA PLAN
SCALE 1/8" = 1'-0"



Johnson County Courthouse		
Description	Quantity	Unit
☐ Access Control Panel	1	Count
☐ Card Reader	3	Count
☐ Panic Button	2	Count
☐ PIR REX	3	Count
☐ Strike	3	Count



convergent

Materials

Line	Qty	Part	Description	Unit Price	Extended Price
1			Johnson County Sub-Courthouse		
2			Access Control Software & Licenses		
3	1.00	PCS-32ES	OnGuard 32ES Server System with PC – includes PC with Microsoft Windows OS (see PC Config) and SQL 2017 Express database loaded with OnGuard Server software license which includes; System Administration; Alarm Monitoring; Map Designer; License Server; Comm. Server; Video Verify Support; E-mail Support; Guard Tour; Login Driver; Account Linkage; support for up to 32 card access readers and first year support plan for new systems. (Includes PC-CONFIG#3 PLATFORM)	\$ 3,207.14	\$ 3,207.14
4	2.00	SWC-32ES	OnGuard 32ES Client Software License – OnGuard Client software license includes; System Administration; Alarm Monitoring; Map Designer and Login Driver. (SOFTWARE IS SUPPORTED ON PC-CONFIG#6 PLATFORM)	\$ 205.71	\$ 411.42
5	1.00	BS-BEP2OA	BIOENTRY PLUS 2 (MULTICLASS)	\$ 808.00	\$ 808.00
6			First Floor		
7			Door Equipment		
8	9.00	BS-BEP2OA	BIOENTRY PLUS 2 (MULTICLASS)	\$ 808.00	\$ 7,272.00
9	9.00	BOS-DS160	PIR REQUEST TO EXIT SENSOR WITH SOUNDER	\$ 75.15	\$ 676.35
10	2.00	RCI-8310DSS28	MULTIMAG LOCK FOR SINGLE DOORW/ DOOR STA	\$ 381.41	\$ 762.82
11	1.00	CM-5085RPTE	RED PNEUMATIC MUSHROOM BUTTN	\$ 201.41	\$ 201.41
12	8.00	HE-100630443	1006 COMPLETE FOR LATCHBOLTS	\$ 395.70	\$ 3,165.60
13	8.00	GI-18012G	18012 3/4" STL DR CONTACT GRY	\$ 5.08	\$ 40.64
14			Panic Buttons		
15	6.00	269R	HOLD UP SEL. LTCH/MOM DPDT SS	\$ 25.70	\$ 154.20
16			Second Floor		
17			IT Room 219		
18	1.00	CON-16RDR-REV8	READY! WOD KIT UNITY ACCESS CONTROL KITS 16 READER REV8	\$ 1,357.14	\$ 1,357.14

convergent

Line	Qty	Part	Description	Unit Price	Extended Price
19	1.00	LNL-X2220	Intelligent Dual Reader Controller – powered by 12 or 24 VDC @ 500mA (w/o Rdr Power),, size (6" (152mm) W x 8" (203mm) L x 1" (25mm)H); 6 MB standard cardholder flash memory, 50,000 of event memory, maximum of 32 devices, On-board Ethernet, Dual Path capability, on-board two door control, OSDP Secure Channel encryption with OnGuard 7.2, Wiegand or F2F; eight inputs, four outputs, cabinet tamper and power fault input monitors. Approvals: FCC Part 15, CE, RoHS, UL 294, UL 1076, CAN/ULC 60839-11-1:2016, CSA C22.2 No. 205-1983, cUL/ORD-C1076	\$ 1,745.71	\$ 1,745.71
20	5.00	LNL-1320-S3	Dual Reader Interface Module (Series 3 – Supports OSDP Readers) – 12/24 VDC, 2 Reader interface, W/M, 8 inputs, 6 (5A) form C relays , RoHS, CE, C-Tick and UL294 certified	\$ 608.57	\$ 3,042.85
21	Door Equipment				
22	3.00	BS-BEP2OA	BIOENTRY PLUS 2 (MULTICLASS)	\$ 808.00	\$ 2,424.00
23	3.00	BOS-DS160	PIR REQUEST TO EXIT SENSOR WITH SOUNDER	\$ 75.15	\$ 225.45
24	3.00	HE-100630443	1006 COMPLETE FOR LATCHBOLTS	\$ 395.70	\$ 1,187.10
25	3.00	GI-18012G	18012 3/4" STL DR CONTACT GRY	\$ 5.08	\$ 15.24
26	Panic Buttons				
27	2.00	269R	HOLD UP SEL. LTCH/MOM DPDT SS	\$ 25.70	\$ 51.40
28	Cable				
29	3.00	446100CT	4 Element Composite Cable Plenum Wht Jkt "CT" Print	\$ 997.14	\$ 2,991.42
30	3.00	555619	24-4P Unshielded Solid Plenum Cat5E Blu Jkt	\$ 257.14	\$ 771.42
31	1.50	444380	22-04 Unshielded Stranded Plenum Wht Jkt	\$ 185.71	\$ 278.56
Equipment Total				\$	30,789.87
Total Labor				\$	26,370.08
Other Costs				\$	4,573.59
Freight/Warranty				\$	1,847.46
Tax if applicable				\$	0.00
Total Project Price				\$	63,581.00

convergint

Clarifications and Exclusion

1. All work proposed herein, shall be performed during normal business hours Monday through Friday 8:00 am - 5:00 pm.
2. Low voltage wiring shall be installed via open air code approved methods.
3. Provision or installation of conduit, wire, boxes, fittings, or other electrical installation materials unless specifically listed under Inclusions or Bill of Materials.
4. Permits or associated fees are included.
5. Customer to provide static IP addresses and network connections at panel locations.
6. Customer to provide a secured staging & storage area for project related materials.
7. Pricing assumes that electronic Auto CAD files are available from customer for our use in creating submittal drawings.
8. Twenty-Five percent (25%) of the proposed sell price shall be payable to Convergent for project mobilization. Mobilization shall be invoiced and due upon customer acceptance of this proposal.
9. Proposal does not include sales tax unless otherwise noted.
10. Anything in the Contract Documents notwithstanding, in no event shall either Contractor or Subcontractor be liable for special, indirect, incidental, or consequential damages, including commercial loss, loss of use, or lost profits, even if either party has been advised of the possibility of such damages.
11. Convergent reserves the right to negotiate mutually acceptable contract terms and conditions with customer by making mutually agreeable changes to the formal contract included in the Bid Documents.

converjnt

Performance Items

Items Included

Authority having Jurisdiction permit drawing (requires customer CAD)	Connection to Building Fire Alarm Panel
Electrified Door Locking Hardware	Freight (prepaid)
Installation of Wire and Cable	Loading Software on Customer Provided Computer
Low Voltage Permits	Material (listed in the BOM)
Mounting/Termination of Proposed Devices	One-Year Warranty on Labor
One-Year Warranty on Parts	Operations & Maintenance Manuals
Owner to Provide Static IP Addresses	Owner Training
Project Management	Servers by Converjnt
System Programming	Termination of Control Equipment Enclosures
Testing of all Proposed Devices	Workstations by Others

Items Excluded

120 VAC Power and Fused Disconnect Switch	120 VAC Power Receptacles
Additional Lighting Requirements for Cameras	Applicable Taxes
Attend General Contractor Project Meetings	Attend Owner Project Meetings
Cable	Ceiling Tiles and Ceiling Grid Repairs
Correction of Wiring Faults Caused by Others	Door wiring typical connections
Electrical Installation Permit	Engineering and Drawings
Equipment rack layout drawing	FA Permit and Plan Review Fees
Fire Stopping (Excludes Existing Penetrations)	Fire Watch
Floor Coverings for Lifts	Floor plan with device placement and numbering (requires customer CAD)
Horizontal Core Drilling	Installation of Bridle Rings
Installation of CCTV Cameras	Installation of Conduit, Boxes and Fittings
Installation of Control Equipment Enclosures	Installation of Control Panels
Installation of Intercom Systems	Installation of Intrusion Panels
Installation of Low Voltage Wire	Installation of Network Cabling to Card Readers
Installation of Network Cabling to IP Cameras	Installation of Network Cabling to IP Intercoms
Installation of Specialty Backboxes	Installation of Terminal Cabinets
Installation of Video Recorders (DVR/NVR)	Installation of Wire Hangars
Lifts	On-Site Lockable Storage Facility
Owner to Provide DHCP Lease Reservations for Network Connected Devices	Panel Wall Elevation drawing (may require customer CAD)
Panel wiring with point to point connections	Patch and Paint
Payment & Performance Bonds	Record Documentation (As-Built)
Riser drawing with home run wiring	Servers by Others
Specialty Backboxes	Submittal Drawings
System Engineering	System is Design-Build
System Meets Plans/Drawings	Terminal Cabinets
Vertical Core Drilling	Wire
Workstations by Converjnt	

convergint

Total Project Investment:

\$ 63,581.00

Thank you for considering Convergint for your Security needs. If you have any questions or would like additional information, please don't hesitate to contact me immediately. If you would like to proceed with the scope of work as outlined in this proposal, please sign below and return to my attention.

Sincerely,

Sean Hamilton
Convergint
Sean Hamilton

By signing below, I accept this proposal and agree to the Terms and Conditions contained herein

Roger Harmon
Customer Name (Printed)

August 27, 2021
Date


Authorized Signature

County Judge
Title



Throughout this Installation Proposal, the term "Convergent" refers to the Convergent Technologies affiliate operating in the state/province in which the work is being performed.

SECTION 1. THE WORK

This Installation Proposal takes precedence over and supersedes any and all prior proposals, correspondence, and oral agreements or representations relating to the work set forth in the attached scope of work ("Work"). This Installation Proposal commences on the Start Date as specified in the attached scope of work and represents the entire agreement between Convergent and Customer (the "Agreement"). In the event any provision of this Agreement is held to be invalid or unenforceable, the remaining provisions of the Agreement shall remain in full force.

Convergent agrees to accommodate with the mutually agreed project schedule:

1. To submit shop drawings, product data, samples and similar documents if required in connection with the Work;
2. To carry out all labor, materials, equipment, tools, supplies, non-performing items, start-ups and decommissioning required to perform the Work in accordance with the Agreement;
3. Secure and pay for permits and to coordinate all fees, licenses and regulations necessary for proper execution and completion of the Work, unless local regulations provide otherwise; and
4. Hire subcontractors and/or contractors to perform part of the Work, if necessary, with Convergent responsible for the completion of the Work.

Customer agrees to accommodate with the mutually agreed project schedule, at a cost in excess to Convergent:

1. To promptly approve documents provided by Convergent;
2. To provide access to all areas of the facility which are necessary to complete the Work;
3. To supply suitable electrical service as required by Convergent; and
4. In the event of any emergency or system failure, reasonable safety precautions will be taken by Convergent to protect life and property during the period of time when Convergent is first notified of the emergency or failure and until such time that Convergent notifies the Customer that the systems are operational and that the emergency has cleared.

No maintenance services are included in the Work. Any such services shall be covered by a separate agreement.

Title to the Work, including any materials comprising the Work, shall pass to Customer as the Work is completed and the materials are incorporated into the Work at Customer's site. If materials are earlier stored at Customer's site pursuant to agreement between Customer and Convergent, title with respect to such materials shall pass to Customer upon delivery to Customer site.

SECTION 2. PRICING

Bidding and estimate proposals shall remain valid for 30 days unless otherwise specified. Price includes only the material listed based on Convergent's interpretation of plans and specifications unless noted otherwise. Additional equipment, access, rejections (per to order placement), will be billed accordingly. Sales taxes, (and in Canada (GST/STP)) and any other taxes assessed on Customer shall be added to the price upon invoice to Customer.

SECTION 3. INVOICE REMITTANCE AND PAYMENT

If the Work is performed over more than a month, Convergent will invoice Customer each month for the Work performed during the previous month. Customer agrees to pay the amount due to Convergent as invoiced within thirty (30) days of the date of such invoice. If the Work is completed in less than one month, Customer agrees to pay Convergent in full after the Work has been performed within thirty (30) days of the date of being invoiced. Invoices shall not be subject to a project retention percentage. If Customer is unable to pay any payment to Convergent, Convergent shall be entitled to suspend the Work until paid, and charge Customer an interest rate of 12% percent per month to the maximum rate permitted by law, whichever is less, and may avail itself of any other legal equitable remedy. Customer shall reimburse Convergent costs incurred in collecting any amounts that become overdue, including attorney fees, court costs and any other reasonable expense.

SECTION 4. WARRANTY

Convergent provides the following EXCLUSIVE AND EXHAUSTIVE warranty to the Customer for the period of one (1) year commencing on the date of substantial completion of the Work, or five (5) business days ("Warranty Period").

1. That Work performed under this Agreement will be of good quality;
2. That all equipment will be new unless otherwise required or permitted by this Agreement;
3. That the Work will be free from defects or failures in the quality required or permitted; and
4. That the Work will conform to the requirements of this Agreement.

The Customer's sole remedy for any breach of this warranty is that Convergent shall repair, replace, test or repair at its own expense any defective or improper Work, discovered within the Warranty Period, provided Convergent is notified in writing of any defect within the Warranty Period.

Any equipment or products installed by Convergent in the course of performing the Work hereunder shall carry with warranty as provided by the manufacturer thereof, which Convergent hereby assigns to Customer as part of its work to Convergent. Upon request of Customer, Convergent will use commercially reasonable efforts to assist Customer in enforcing any such third-party warranties. This warranty excludes remedy for damage or defect caused by abuse, modifications, act executed by Convergent, improper or insufficient maintenance, improper operation, or normal wear and tear under normal usage. NO FURTHER WARRANTIES OR GUARANTEES, EXPRESS OR IMPLIED, ARE MADE WITH RESPECT TO ANY GOODS OR SERVICES PROVIDED UNDER THIS AGREEMENT AND ANY IMPLIED WARRANTIES OF MERCHANTABILITY OR FITNESS FOR A PARTICULAR PURPOSE ARE EXPRESSLY DISCLAIMED.

SECTION 5. CHANGES

Without invalidating this Agreement or any bond given hereunder, Customer or Convergent may request changes in the Work. Any changes to the Agreement shall be in writing signed by both Customer and Convergent. If Customer orders any additional work or causes any material interference with Convergent's performance of the Work, Convergent shall be entitled to a reasonable adjustment to the time for performance and to the Agreement Price, including a reasonable allowance for overhead and profit.

SECTION 6. FORCE MAJEURE

Neither Customer nor Convergent shall be responsible or liable for, shall incur expense for, or be deemed to be in breach of this Agreement, because of any delay or the performance of their respective obligations pursuant to this Agreement due solely to circumstances beyond their reasonable control ("Force Majeure") and without the fault or negligence of the party experiencing such delay. A Force Majeure event shall include but not be limited to accident, fire, storm, water flooding, negligence, vandalism, power failure, installation of unacceptable equipment, improper engineering procedures, source material shortages or lighting. If performance by either party is delayed due to Force Majeure, the time for performance shall be extended for a period of time reasonably necessary to mitigate the effect of the delay. Any Services required by Convergent due to reasons set forth in this Force Majeure Section shall be charged to Customer in addition to any amounts due under this Agreement.

SECTION 7. INSURANCE

Convergent shall have the following insurance coverage during the term of this Agreement, and shall provide conditions of insurance to the Customer prior to beginning work hereunder:

Worker's Compensation	National Limits
Employer's Liability	\$1,000,000 per occurrence aggregate
Contractual General Liability	\$1,000,000 per occurrence aggregate
	\$2,000,000 general aggregate
Automobile Liability	\$1,000,000 per occurrence aggregate
Excess Umbrella Liability	\$10,000,000 per occurrence aggregate

All insurance policies owned by Convergent shall be primary and non-contributory with the insurance afforded to Customer and shall name the Customer as "additional insured", with respect to liability arising out of work performed by Convergent, as applicable but only to the extent of liabilities falling within the known obligations of Convergent pursuant to the terms of the Agreement. Convergent shall provide to the Customer no less than forty (40) days' notice prior to the termination or cancellation of any such insurance policy.

SECTION 8. INDEMNIFICATION

Convergent shall indemnify and hold Customer harmless from and against claims, damages, losses and expenses, attorneys' fees, punitive damages, interest or costs, or to destruction of tangible property, but only to the extent caused by: (a) the negligence or willful acts or omissions of Convergent or Convergent's employees or subcontractors while at Customer's site, or (b) the installation of the equipment supplied by Convergent, or (c) Convergent's breach of this Agreement.

IN NO EVENT SHALL EITHER CONVERGENT OR CUSTOMER BE LIABLE TO THE OTHER PARTY HEREUNDER FOR SPECIAL, INDIRECT, INCIDENTAL OR CONSEQUENTIAL DAMAGES, INCLUDING COMMERCIAL LOSS, LOSS OF USE OR LOST PROFITS, EVEN IF THAT PARTY HAS BEEN ADVISED OF THE POSSIBILITY OF SUCH DAMAGES. IN NO EVENT WILL CONVERGENT BE LIABLE TO CUSTOMER FOR ANY AMOUNTS IN EXCESS OF THE AMOUNTS PAID BY CUSTOMER TO CONVERGENT.

It is understood and agreed by the parties hereto that Convergent may be providing intangible products which are designed to provide notification of certain events but are not intended to be guarantees or indicators of any acts for which they are supposed to monitor or inform. Convergent's communication obligation pursuant to Section 3 hereof, does not apply to the extent the loss or damage resulting is caused by any intangible product or software provided by but not manufactured by Convergent. Convergent shall have no liability to Customer, for any losses to the extent such losses are caused by the intangible product or software. Customer shall indemnify, defend and hold harmless Convergent, from and against all claims, lawsuits, damages, losses and expenses by persons not a party to this Agreement, but only to the extent caused by such intangible product or software provided by but not manufactured by Convergent.

SECTION 9. COMPLIANCE WITH LAW, SAFETY, & HAZARDOUS MATERIALS

This Agreement shall be governed and construed in accordance with the law of the state/province in which the Work is being performed. Convergent agrees to comply with all laws and regulations relating to or governing as part of the Work. Convergent shall comply with all safety related laws and regulations and with the safety program and the Customer's provided and approved safety program for the project. In the event that Convergent discovers or suspects the presence of hazardous materials, or unsafe working conditions at Customer's facility where the Work is to be performed, Convergent is entitled to stop the Work at that facility if such hazardous materials, or unsafe working conditions were not provided for or caused by Convergent. Customer must schedule and shall determine when to "take" time to perform the Work at Customer's facility. Convergent shall have no responsibility for the discovery, presence, handling, removal, or disposal of or exposure of persons to hazardous materials in any form at the Customer's facility. Customer shall indemnify and hold harmless Convergent from and against claims, damages, losses and expenses, including but not limited to, reasonable attorney's fees, arising out of or resulting from undisclosed hazardous materials or unsafe working conditions at Customer's facility.

Customer acknowledges that applicable law or regulation may limit Customer's rights and impose obligations with respect to information or data obtained using software capable of obtaining what may be certain circumstances be characterized as business information individually and collectively. The "Software" and agrees that Customer is solely responsible to ensure its own compliance with such laws or regulations. Customer shall completely indemnify, defend (including pay attorney's fees and disbursements), and hold harmless Convergent, its affiliates and any employees, agents, contractors or representatives of any of the foregoing from and against any and all losses, liability, damages, penalties, expenses, claims, demands, actions, or causes of action, judgments finally awarded or settlements (individually and collectively, "Liabilities") arising from or related to any intentional or negligent acts or omissions of Customer or any of its agents, affiliates, employees, or representatives arising from or related to the Software, any hardware, software or other services associated with the Software, or the use of any of the foregoing by or on behalf of Customer, including but not limited to those arising from or related to Customer's failure to comply with applicable laws or regulations related to its use of the Software or any hardware, software or other services associated with the Software, including but not limited to the Customer's failure to obtain any necessary consent from affected individuals or provide any necessary data to meet or comply with applicable laws or regulations related to the information under any applicable privacy or data security laws, but excluding matters for which Convergent has agreed to indemnify Customer, from and against third party claims for copyright and trade secret infringement under the terms of the End User License Agreement for the Software between Convergent and Customer. Notwithstanding the foregoing, Customer and Convergent agree that Liabilities suffered by a third party (other than an affiliate of Convergent) which are an element of loss subject to indemnification under this paragraph shall be deemed direct damages.

SECTION 10. DISPUTES

In the event of any dispute between Convergent and Customer, Convergent and Customer shall first attempt to resolve the dispute in the field, but if that is not successful, they may meet in person or by video conference of each company. If settlement attempts are not successful, then the dispute shall be decided exclusively by arbitration. Such arbitration shall be conducted in accordance with the Convention on Enforcement of the American Arbitration Association's rules to effect and shall be a final binding resolution of the issues presented between the parties. The prevailing party shall be entitled to recover its reasonable attorney's fees and costs.

SECTION 11. MISCELLANEOUS

Neither party to this Agreement shall assign this Agreement or any of its rights, subsidiaries or affiliated companies or any entity, in any form, to any other party.

Notices shall be in writing and addressed to the other party, in accordance with the names and addresses of the parties as shown above. All notices shall be effective upon receipt by the party to whom the notice was sent. A waiver of the terms, conditions, or any part of the other party shall not be effective unless in writing and signed by a person who is authorized to contract the Customer or Convergent, and delivered to the non-waiving party according to the notice provision herein. No waiver by Customer or Convergent shall operate as a continuing waiver, unless the written waiver specifically states that it is a continuing waiver of the terms stated in that waiver.

The Notices regarding incoming warranties, and indemnity, and disputes shall survive the termination of this Agreement.